

Winding House Drive, Hednesford, WS12 4FP

Offers In The Region Of £295,000

Council Tax Band: D



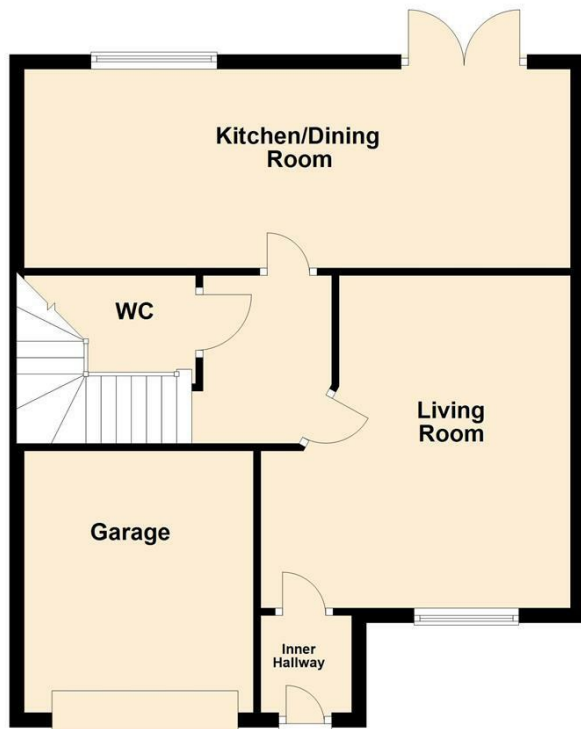
A Modern Detached Family Home in a Popular Cannock Chase Location – Winding House Drive, Hednesford

Situated in a sought-after modern development just a stone’s throw from the stunning Cannock Chase Area of Outstanding Natural Beauty, this stylish three-bedroom detached home on Winding House Drive offers the perfect balance of comfort, practicality, and convenience.

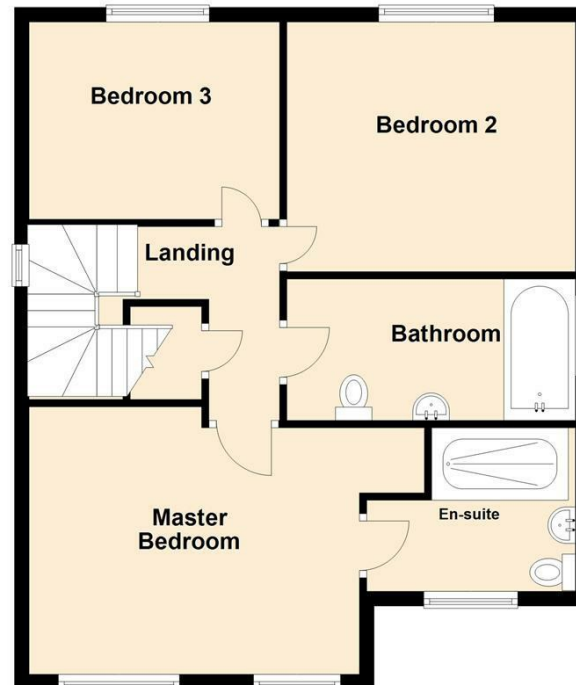


Open House Staffordshire

Ground Floor



First Floor



Energy Efficiency Rating		Current	Potential
Very energy efficient - lower running costs			
(92 plus)	A	81	
(81-91)	B		
(69-80)	C		
(55-68)	D		
(39-54)	E		
(21-38)	F		
(1-20)	G		
Not energy efficient - higher running costs			
England & Wales		EU Directive 2002/91/EC	